

Mobile Incident Command Center

Darren Jones, GISP

GIS Analyst I

Roanoke County, VA

Mobile Incident Command Center

- Initiation
 - Time and costs
- Design Philosophy
- Applications
- ArcGIS Online Updates
 - What happens when the platform evolves mid-project
- Challenges and Solutions
- Wrap-up and what's next?

Initiation Timeline

- 2014 – Proposed by Police
 - Reduce dependence on paper
 - Digital record of incidents
 - Reduce costs
 - Original system was proposed at >\$100K and an annual ~\$20K maintenance & hosting fee
 - Late 2014 Fire & Rescue come on board
- 2015 – First iteration of MICC ready for testing
 - Shared interface
 - Separate symbology
 - Added attachments
- 2016 – Wildfire and Hydrant Maintenance
 - Collector takes center stage
 - Disconnected Editing
- 2017 – Database redesign
 - New Schema
 - ArcGIS Online (AGOL) new temporal feature
 - Allows near real-time tracking of personnel
- Total Costs
 - 950+ hours development and testing
 - ~\$19,000 in development costs
 - Employee time and salary, no external vendor

Design Philosophy

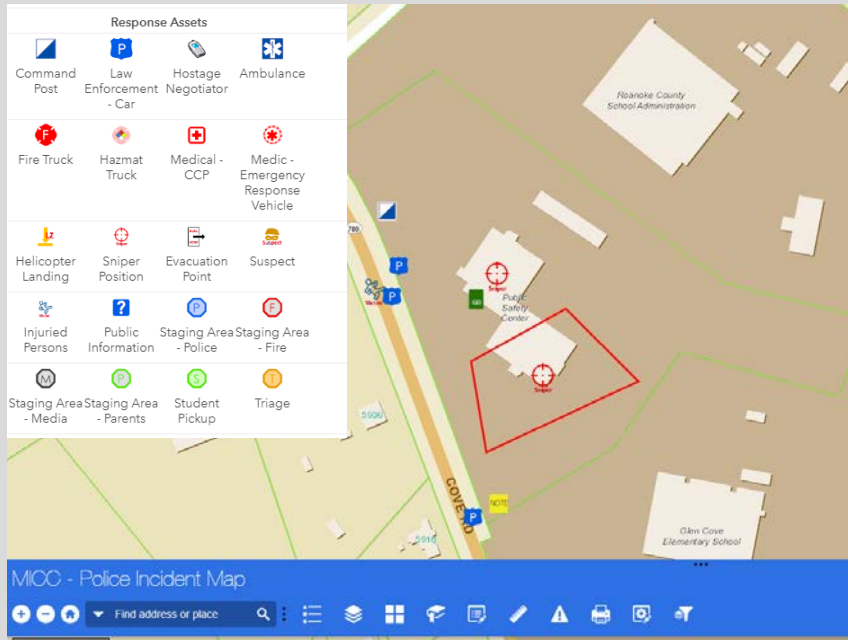
- Shared Interface
 - Police and Fire & Rescue have some individual symbology
- Easy to use user interface
 - ArcGIS Online (AGOL) front end
- Browser and device agnostic
 - No required applications to view
 - Collector required for editing and personnel tracking
 - Survey123 required for survey model editing
- Offline editing
- Personnel tracking
- Data stored on County servers
 - Data consumed/edited through feature services

Applications

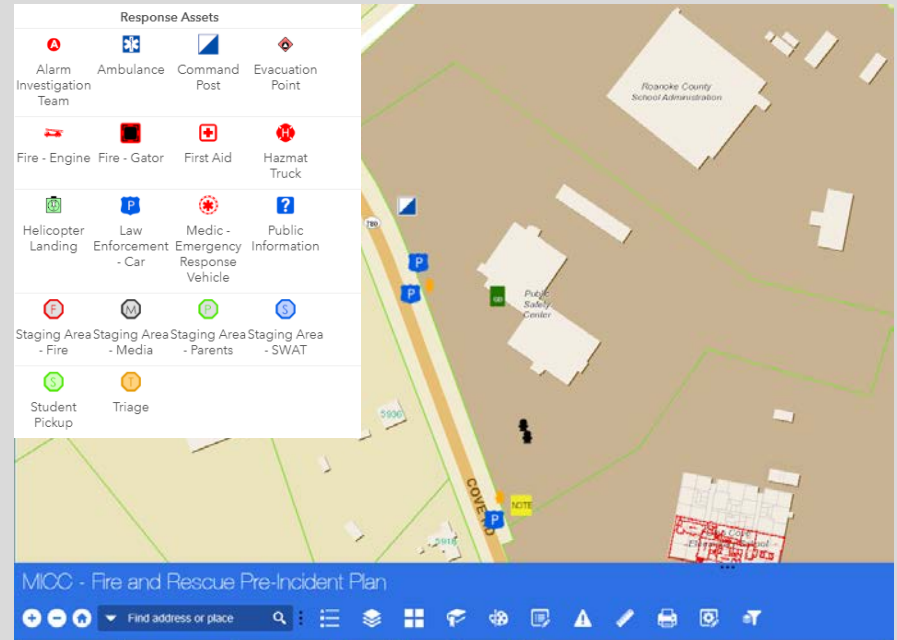
- Police Incident
- Fire & Rescue Pre-Incident Planning
- Wildfire Incident
- Hydrant Inventory
- Damage Assessment
- Structure Triage

Applications

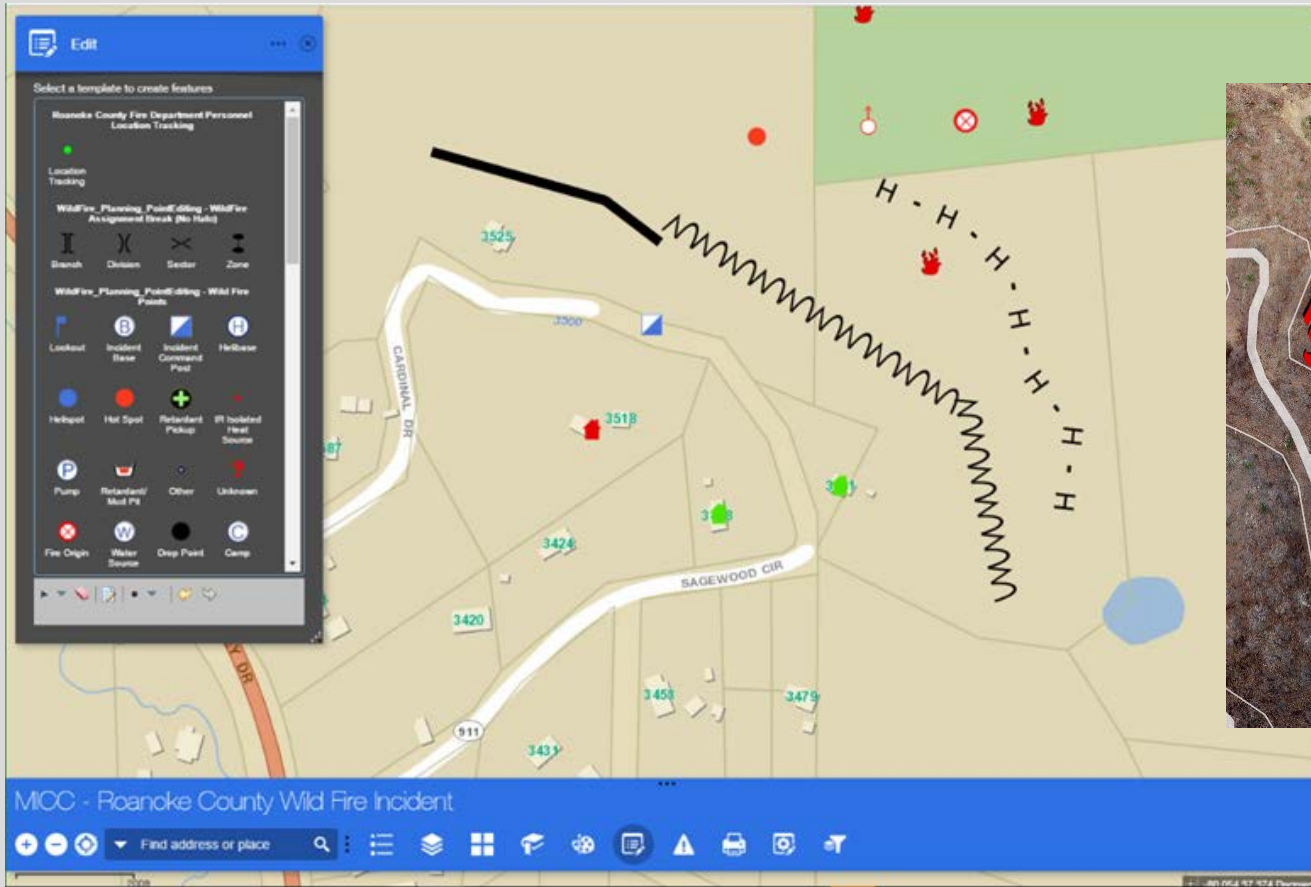
- Police Incident



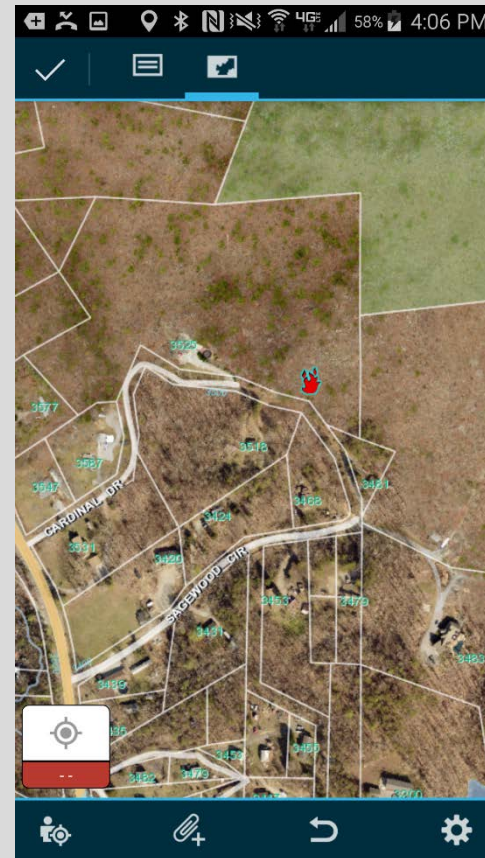
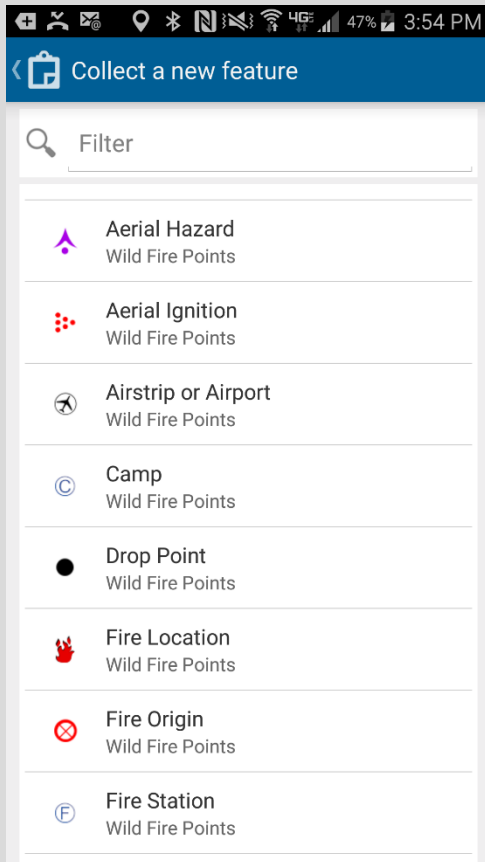
- Fire & Rescue Pre-incident Plan



Wildfire Incident – Web Application

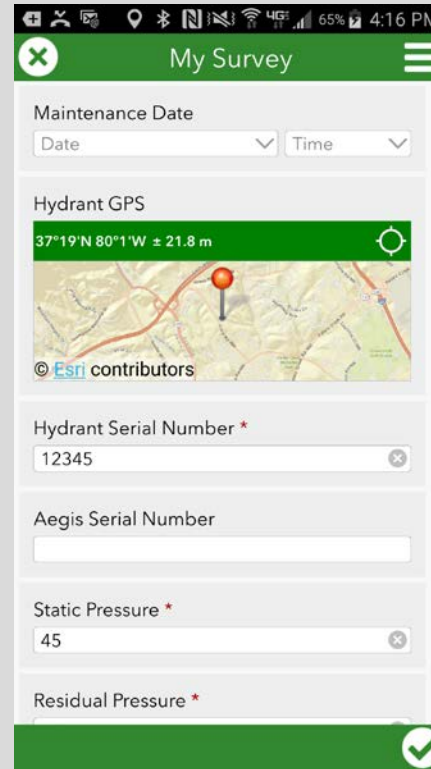
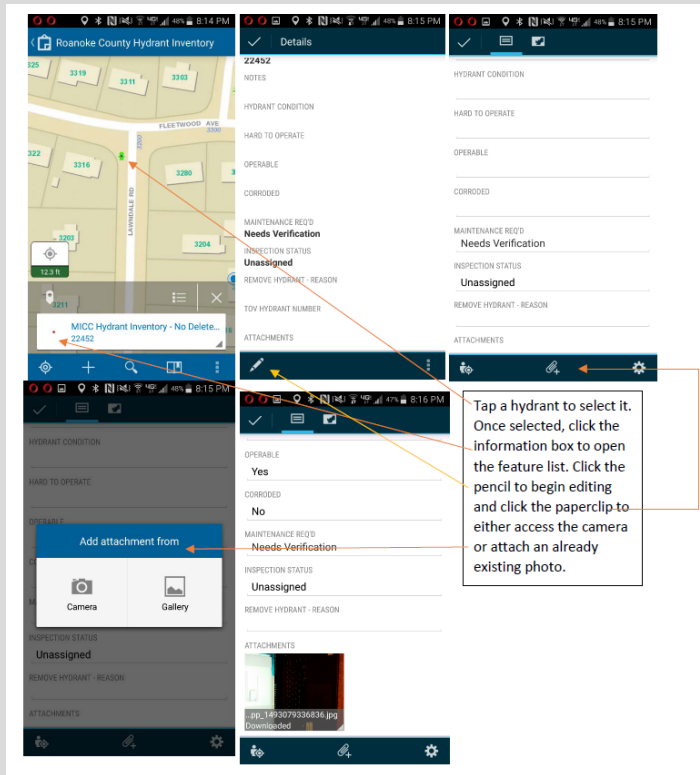


Wildfire Incident - Collector



Hydrant Inventory

Transition from Collector to Survey123



Damage Assessment and Structure Triage

Residential Buildings

Primary Cause of Damage
Select the primary cause of the damage:

Description of Damage
Please provide a description of the damage:

Estimated \$ Loss Structure
Specify the estimate loss value:

Estimated \$ Loss Contents
Specify the estimate loss contents:

Impact to Jurisdiction
What is the overall impact to the Jurisdiction?:

Additional Comments
Please provide any additional comments or context that:

Structure Triage

Type of Structure *
Primary use of structure, Is it used as a home or living area (Residential), Is it used as a business (Commercial), Is it used to manufacture goods or a type of industrial site (Industrial)

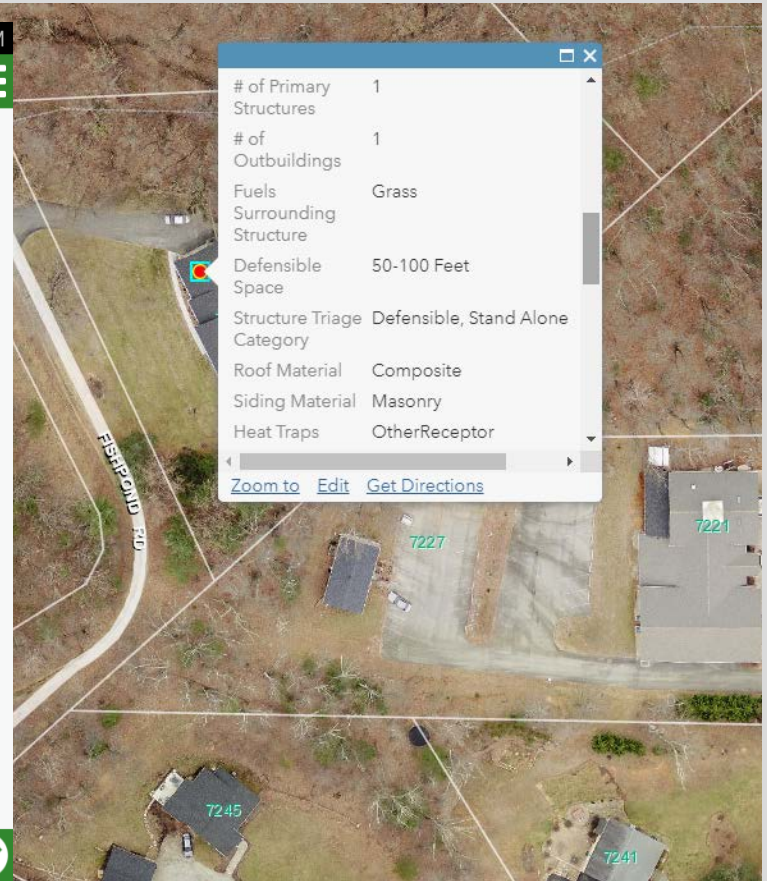
Residential Commercial
 Industrial MixedUse
 Other

of Primary Structures *
Number of living structures: 1

of Outbuildings *
Number of non-livable structures:

Fuels Surrounding Structure *
Primary Fuel Type in the Area

Grass Shrub
 Timber Slash
 None



ArcGIS Online Platform

- Cloud Based (Amazon Web Services)
- Free Accounts
- Can create maps from local data or from the Living Atlas
 - Limited Storage of data
 - GIS editing in the palm of your hand
- Enterprise License Agreement (ELA)
 - Cost Based on size of locality by population
 - Grants allowable credits
 - Data storage
 - Analysis
 - Demographic Data and Income Reports
- Quarterly Updates across the platform
 - Occasionally causes application instability

Challenges and Solutions

- **Development**
 - Original deployment had very beta application templates
 - Choose to use Local Government Information Model (LGIM) or go custom
 - Can use already existing templates to shorten development/deployment
 - Many partners who can assist
 - Can develop in house given lead time
 - New ArcGIS Pro deployment tools
 - Vastly decreases design time because of database integration
 - Challenges with platform
 - Updates and outright changes can delay the deployment
 - Editing online and offline with complex symbology is undergoing a revision
- **Changes to Project**
 - Scope Creep
 - Adjustments based on in-field testing
 - Security at project, application or layer level
- **Application and Environment familiarity**
 - Takes time to get used to the platform and the tools
 - Once you deploy one application others go quickly

Wrap Up and What's Next

- Great platform to develop applications for localities
 - Great for other departments
 - Planning and Zoning
 - Code Enforcement
 - Public Works
 - Financially neutral when developing in house
 - Do not need local servers to drive data collection
- New Collector App
 - Easier editing complex symbology
- Finish porting applications to Survey123
- Updating Applications for new Public Safety mission
 - Modifying symbology for particular incidents/departments (SWAT, Patrol, etc)

Thank You

Darren Jones

County of Roanoke

dsjones@roanokecountyva.gov

gis.roanokecountyva.gov

www.arcgis.com

www.esri.com

www.esri.com/training/