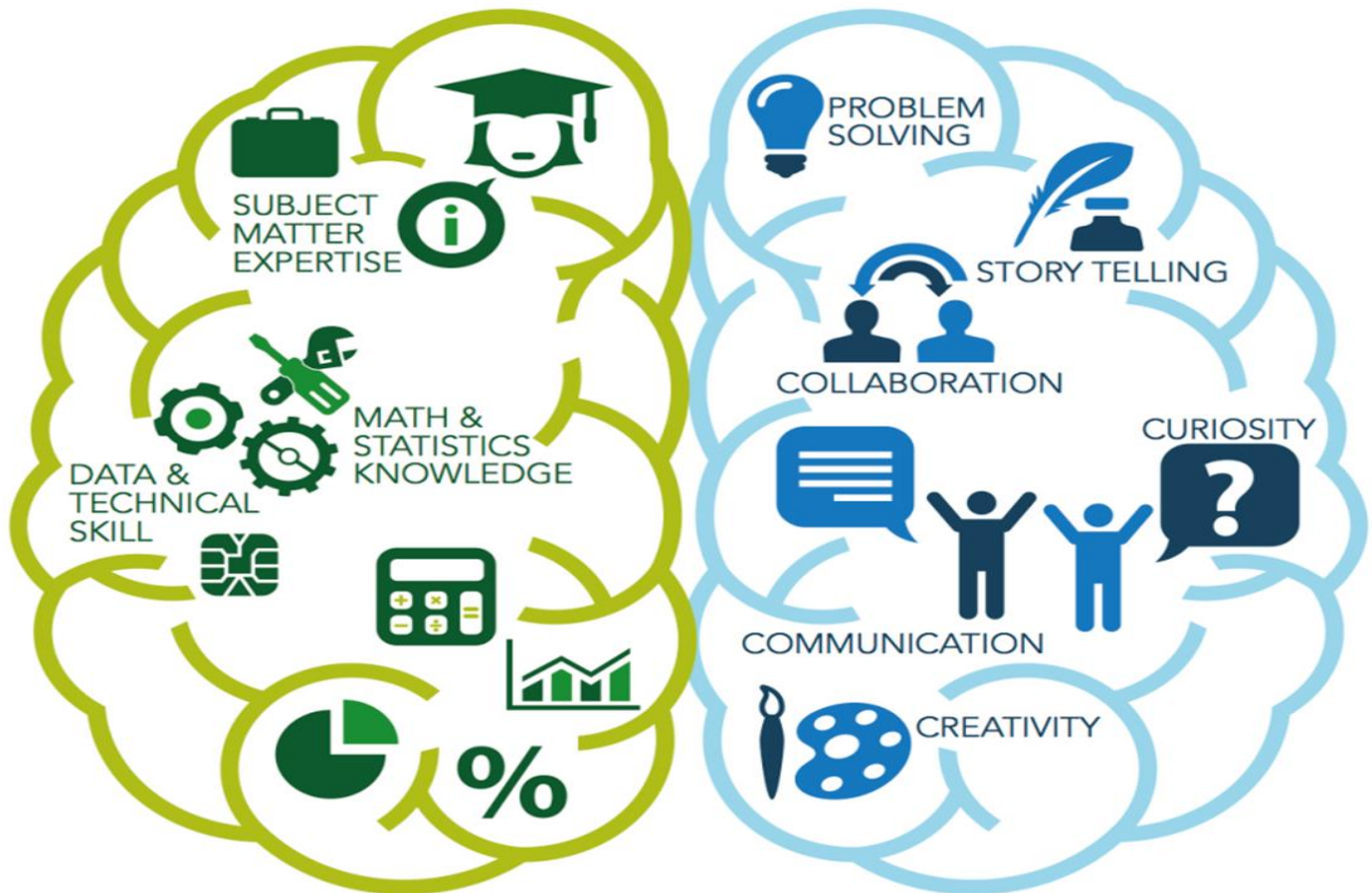


## HARD SKILLS

## SOFT SKILLS



# COORDINATOR OF RESEARCH AND PERFORMANCE MANAGEMENT

**Work for an award winning, employer of choice!**

The County of Albemarle is all about organizational performance. We are committed to living our values of innovation, stewardship, learning, and integrity, while realizing our mission of delivering the highest level of public service possible. We empower employees to push themselves personally and professionally, to transform good into great, and to drive this organization into the future.

### Summary

We are looking for a team player who will work in the Office of Management and Budget and in close coordination with others on the County Executive's team to provide leadership in the development, implementation and communication of the County's organizational, customer service, and strategic plan performance management system. This position will expand the County's focus on data

analytics, key performance metrics and benchmarking, and will provide performance data-related consultation and training to staff throughout the County.

## Qualifications

The requirements listed below are representative of the knowledge/skill, and /or abilities that are required.

- Extensive knowledge of organizational performance management concepts, programs, projects, and evaluation, or related work.
- Extensive knowledge and skills in data analysis, statistical methodology, data collection, and evaluation of strategic plan results Thorough knowledge of statistical analysis and research principles.
- Knowledge of organizational development or organizational performance management databases.
- Strong oral and written communication skills, including the ability to explain data and findings to leadership, staff, community partners, state and local governments and agencies and the community.
- Ability to plan and work with multiple projects to meet competing deadlines.
- Ability to communicate effectively both orally and in writing with staff, others.
- Ability to establish working relationships with staff, other agencies and the community.
- Excellent teamwork and interpersonal skills.

A Bachelor's degree in statistics, public administration, public policy, data analytics, government, or another related field is required. A master's degree is preferred.

Please visit [www.albemarle.org/jobs](http://www.albemarle.org/jobs) for a complete list of duties and qualifications. Contact Lori Allshouse at 434-296-5841 or [lallshouse@albemarle.org](mailto:lallshouse@albemarle.org) with any questions. **Application deadline is December 3, 2018.**

