

# Update: Water Supply Activities

Virginia Association of Counties

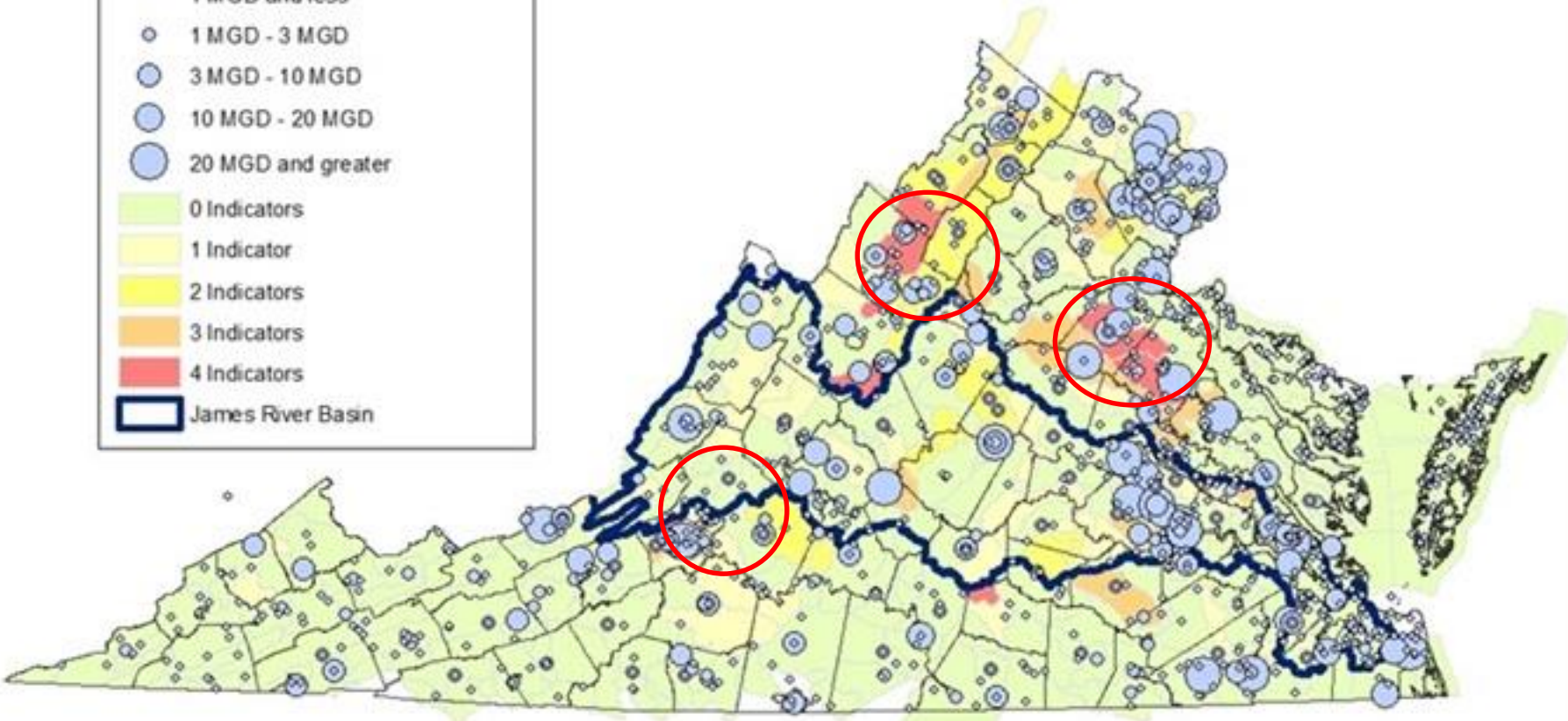
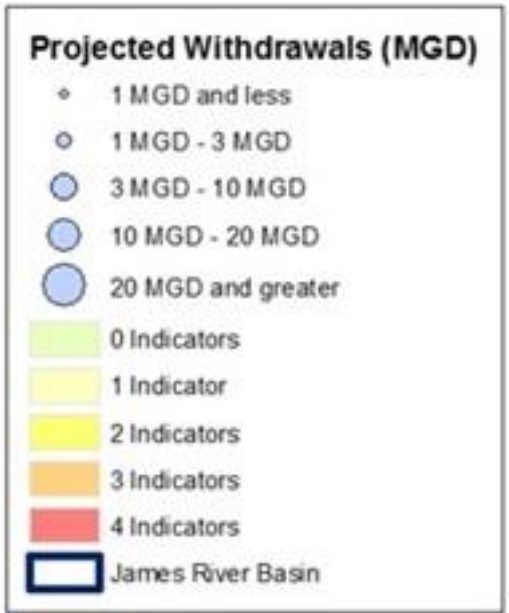
July 17, 2017

# Local Regional Water Supply Planning Regulation

- 2012-2013 WSP compliance evaluations by DEQ
- 2014-2015 State Water Resources Plan developed
- 2016-2017 Outreach to Localities, VAHydro “**Living Plan**” development and training
- 2018 Localities review plans; Outstanding compliance items due
- 2023 New Local and Regional Water Supply Plans due



# Projected Water Demand from 2010-2040



This map was created by the Office of Water Supply at the Virginia Department of Environmental Quality

# Next Steps

- Local governments address WSP approval conditions by submitting or updating data in a common data system (VAHydro)
- DEQ will provide assistance and guidance to access and use VA Hydro
- Goal is for CIA Modeling to reflect the most current information available to the greatest extent possible (WSP data, land use, etc.)
- Goal is that the modeling will inform state and local planning and permitting decisions

# GWMA Path Forward(2013)

## Reduce current permitted use

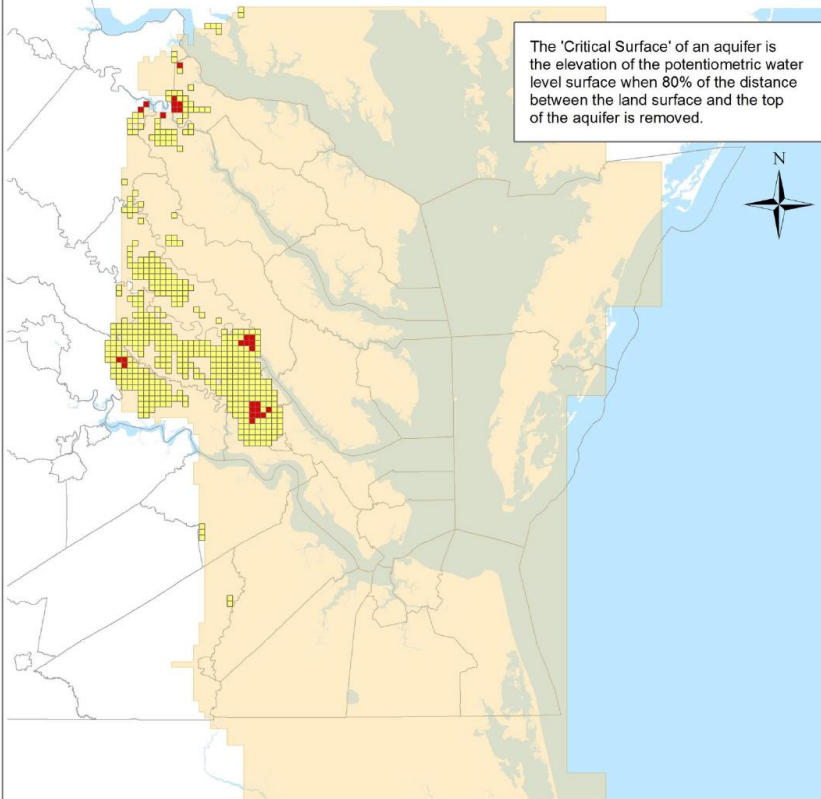
- Identified potential permitting solutions
  - Reductions (57%) expected to stabilize groundwater level declines by 2025
  - 14 users permitted for 87% of withdrawal
  - Impacts actual use of 3 permittees
  - Individual reduction targets discussed with each permittee requested that they provide a 10 year reduction plan for what they can achieve
  - Goal is to issue all remaining permits by end of 2015

# GWMA Permitting Update (2017)

- 13 of the 14 permittees identified for reductions have been issued new reduced permits
- 1 has completed the public notice process and the applicant was the only commentor and they asked for a public hearing (tentatively August 30)
- Goal was a 57% reduction – Achieved a 52% reduction
- Reduced permitted amount from 146.54 – 69.78 mgd



## 2015 Total Permitted Simulation - Piney Point Aquifer Simulated Water Levels Below the Critical Surface and Below the Aquifer Top



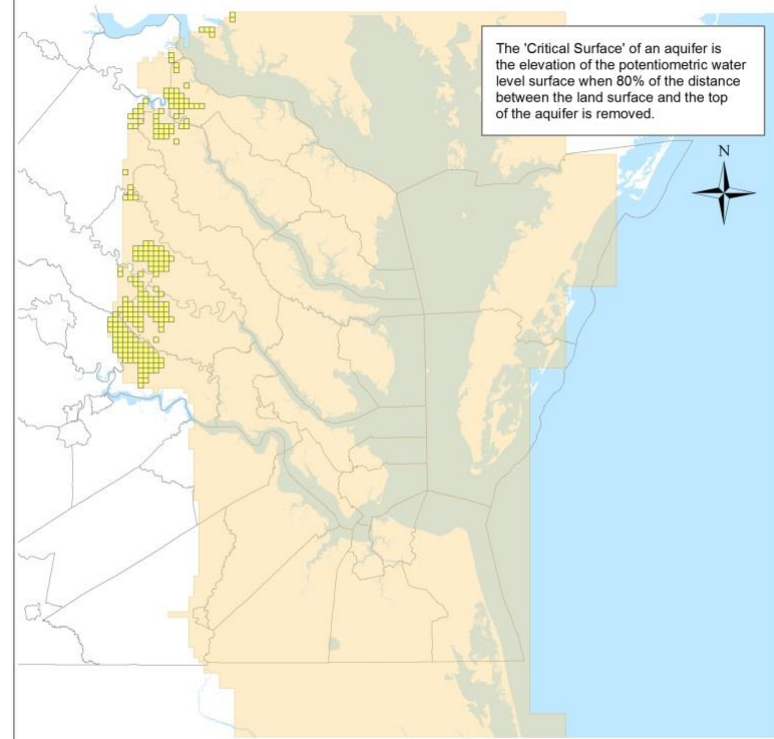
- Cells that simulate water levels below the top of the aquifer
- Cells that simulate water levels below the Critical Surface
- Piney Point Aquifer Model Boundary

0 15 30 60  
Miles

Prepared by Aquaveo, LLC for the Virginia DEQ, Office of Water Supply September 1, 2015



## Current Negotiated Simulation - Piney Point Aquifer Simulated Water Levels Below the Critical Surface



- Cells that simulate water levels below the Critical Surface
- Piney Point Aquifer Model Boundary

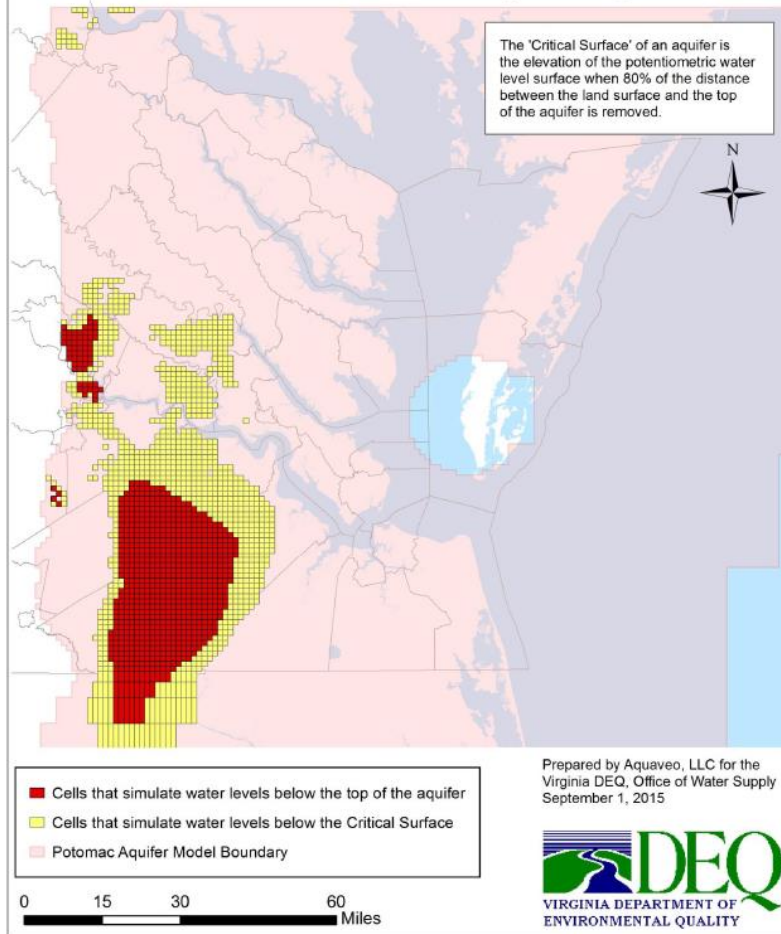
0 15 30 60  
Miles

Prepared by Aquaveo, LLC for the Virginia DEQ, Office of Water Supply March 13, 2017

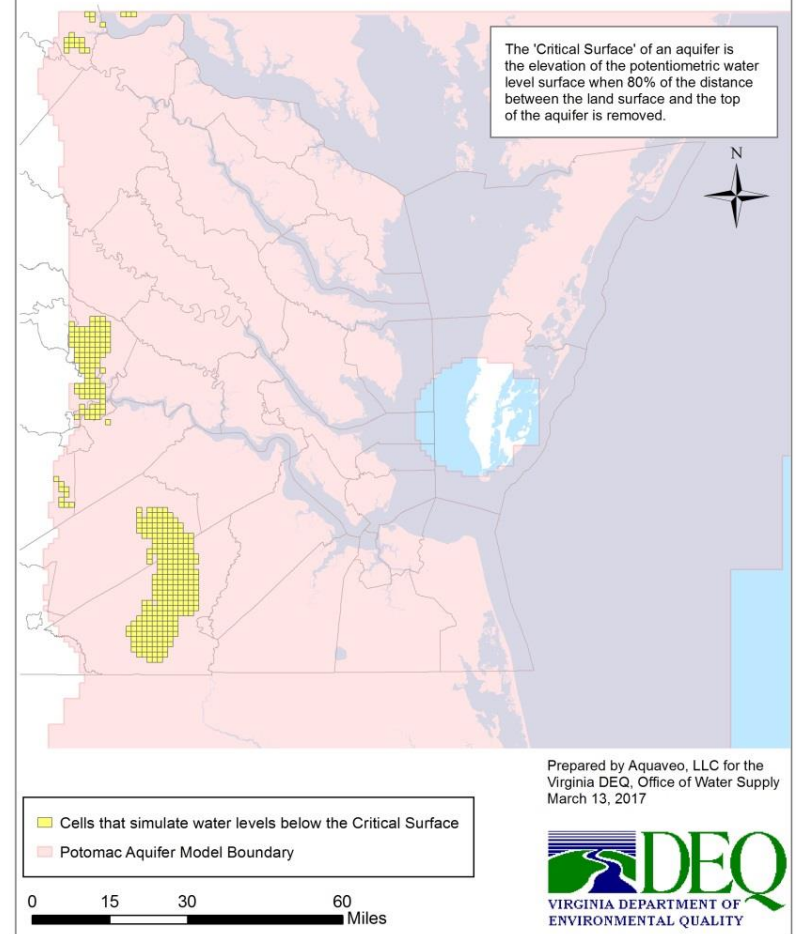




### 2015 Total Permitted Simulation - Potomac Aquifer Simulated Water Levels Below the Critical Surface and Below the Aquifer Top



### Current Negotiated Simulation - Potomac Aquifer Simulated Water Levels Below the Critical Surface



# Eastern Virginia Groundwater Management Advisory Committee

- Finalizing their report in the next few weeks
- Focus on long-term sustainability recommendations
- May address unregulated use, promote incentives for alternative sources, and encourage greater use of the surficial aquifer

Scott Kudlas  
Office of Water Supply

[Scott.kudlas@deq.virginia.gov](mailto:Scott.kudlas@deq.virginia.gov)